

OUR VISION

TURN



MOSS



**“You don’t realise what you have
- until it is threatened”**

Who are we?

Friends of Turn Moss ❤️ (FoTM) was established in May 2018. We are all volunteers with a passion for the site and a vision to create a safe, well maintained, accessible and environmentally diverse recreational green space, which serves the whole community. We initially came together in early 2018, campaigning to halt plans which would have resulted in a sizeable area of Turn Moss being fenced off for a private football club. The campaign galvanised thousands of people and the many discussions it generated inform our priorities.

Development of the site

There has been very little investment in the site over the past decade and improvements are desperately needed. As a Friends Group we can apply for grants and can fundraise to help bring positive change. We work alongside Trafford Council and key stakeholders to improve Turn Moss for the benefit of the local sports teams and all the other users. We ensure the Council are held accountable and meet their responsibilities.

VISION SUMMARY

*We believe Turn Moss has huge potential and can become a fantastic **Sport and Health Hub for Trafford**. It needs better facilities, thoughtful improvements to widen its appeal and for the site’s present assets to be used more creatively.*

*In addition, the fields of Turn Moss represent the ideal site to become **Trafford's Gateway to the Mersey Valley** because not only does it enjoy a wonderful location alongside the River Mersey, the Bridgewater Canal and the Trans-Pennine Trail, it also offers a "green route" linking the communities of north, west and south Trafford, as well as Chorlton. Longford Park is just across the road and we feel the two sites should be better connected.*

We need a versatile space for the whole community

- with **excellent facilities** for local sports teams
- that has a **meeting space** which allows many more local community groups to use the space
- a location for **community events and activities**
- a place where we can **support local people to achieve greater activity levels**, helping Trafford Council to meet its health targets
- that has **wildflower meadows and a managed wetland alongside a community orchard and gardens**. Perhaps some of the pitch drainage issues can be helped by working with nature?
- a space which **improves biodiversity** and provides a buffer from pollution. The wild field margins are a wonderful opportunity to create new habitats
- with a **walking and cycling path** from Turn Moss car park to Hawthorn Lane increasing accessibility for all ages and abilities
- with a **wide open aspect** which brings many wellbeing benefits, creating a happier and healthier local population

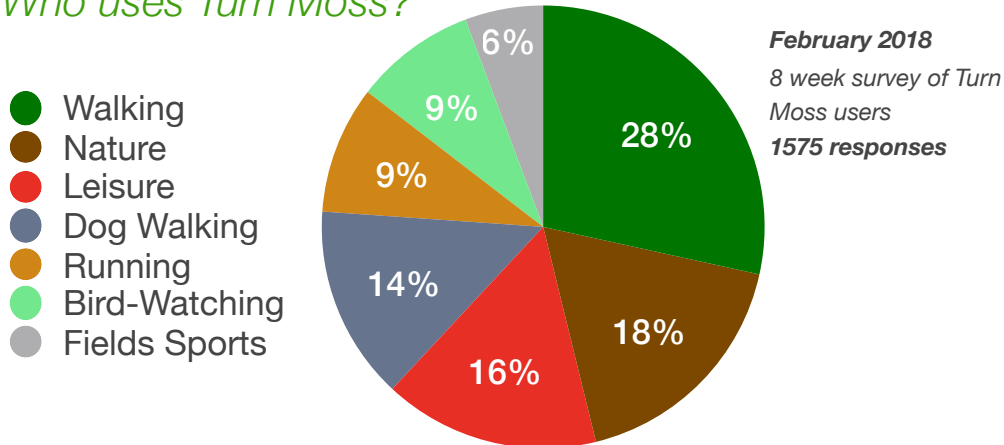
Our Community

FoTM is one of the largest Friends Groups in Trafford (approximately 3000+ Facebook and Twitter followers). This provides a huge volunteer base and allows us to utilise social media, alongside conventional methods, to communicate and work with our local community.

We are an unincorporated voluntary association with a Committee who meet regularly. Sub-groups support the Committee and focus on key areas to improve and maintain Turn Moss:

Sports and Recreation
Accessibility
Planting and Ecology
Community Engagement
Heritage and Future Legacy

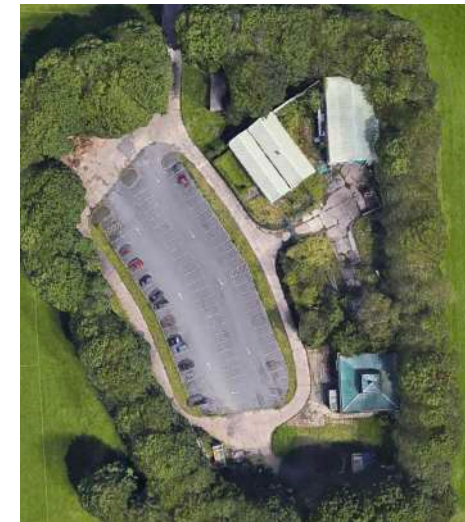
Who uses Turn Moss?



“Almost 50% of visitors have used the fields for 20 years or more. Turn Moss is much-loved. Once it is discovered, people return again and again”

Our Location

Turn Moss is a recreational area in Stretford, a green gateway to The Mersey Valley, at the southern edge of Longford ward in Trafford. There are two rights of way which cross the fields, connecting the boroughs of Chorlton and Stretford. The site comprises a small car park, surrounded by playing fields (39 hectares) and meadows. It is greenbelt land and the fields are bordered all around by mixed tree woodland (8 hectares), criss-crossing the fields are ancient hedgerows.



There are changing rooms alongside the car park and a fenced compound with two disused buildings, previously used as a Council Depot. This compound provides exciting possibilities to improve community facilities. We will work with users and architects to explore ideas and present these to Trafford Council.

Turn Moss is a flood zone, it serves a key function during wet months of the year, protecting nearby properties from flooding. Improvements to pitches and paths are necessary to future-proof them and ensure they work with nature.



Friends of Turn Moss Objectives

- 1. Help create a well-maintained, safe and open public green space which enhances the quality of life for local people and users by improving their physical and mental wellbeing.*
- 2. Ensure Turn Moss remains an open greenbelt site for all those who wish to enjoy the space now and in the future. Work to improve sports and community facilities, enhance the biodiversity and protect the rights of way which cross the fields and aim to safeguard the elements of quiet enjoyment and open aspect enjoyed by all users and local neighbours of Turn Moss at present.*
- 3. Listen to the views and opinions of FoTM members, users of the site, neighbours and other key stakeholders and liaise with Trafford Council and delivery partners to ensure the site is a well-maintained and safe space.*
- 4. Improve funding to maintain and increase the facilities at Turn Moss by working in partnership with Trafford Council and other stakeholders and relevant partner organisations.*
- 5. Encourage more people from all sections of the community to use Turn Moss in the interest of social welfare and education, with the object of improving the conditions of life in the local community.*
- 6. Raise funds and receive contributions which will enable us to run events at Turn Moss, finance improvements to facilities and enhance the natural environment.*
- 7. Wherever possible, involve local people in improving Turn Moss and use sustainable resources and local suppliers for services and products.*

What needs to be improved?

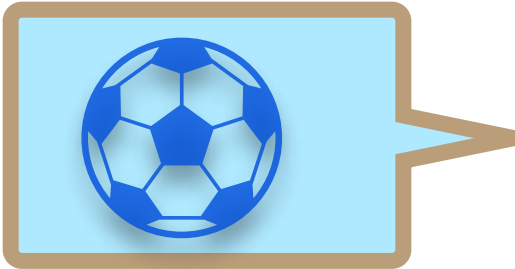
- **CHANGING ROOMS:** We want modern facilities for the local sports teams based here. With high quality, clean and secure changing rooms, we believe other community and recreational groups will use the fields. It will generate more money for Trafford Council and with a detailed Site Management Plan, facilities can be better maintained and regular upgrades can be scheduled. Changes are essential to encourage more women and youth teams to use Turn Moss. A new design must ensure multiple, flexible and secure spaces, with separate entry points to safely accommodate all ages and genders.
- **PITCHES.** Create flat, well-draining sports pitches, utilising lower lying areas for onsite water retention where possible. Improve grass conditions with better drainage solutions and regular maintenance. Use Sustainable Urban Drainage (SUDs) natural solutions in accordance with policies adopted by Trafford Council. Discuss with current teams and Trafford Leisure whether pitch reconfiguring would be beneficial, this could create more junior pitches to satisfy current demand.
- **TOILETS.** Accessible toilets for teams, with separate toilets for officials. Public facilities including well designed, high standard provision for people with disabilities.
- **CAR & BIKE PARKING.** At busy times the car park is full and cars park on the fields and on Turn Moss Road. With clearance of the fly-tipped spoil heap from the north-western side of the car park, we believe more cars can be accommodated. We will encourage visitors to arrive by public transport and active travel, especially by bike, secure bike parking is needed.
- **PATH IMPROVEMENTS.** An all weather path is needed to allow walking and cycling across the site for all abilities and ages. Having a reliable connection to Hawthorn Lane will ensure good accessibility.
- **FOOD/DRINK/CAFE.** Provide a place to grab a drink and a bite to eat. In the short-term, that may be by offering a hook-up facility for street food and drink operators and in the longer-term we would like to explore the viability of a permanent cafe and/or visitors office facility on site.
- **SECURITY.** Reduce fly-tipping, dog fouling, anti-social behaviour and prevent pitch damage by vehicles. Encourage community responsibility via easier reporting, cctv, signage, spot fines and more prosecutions.

Improvements Delivered So Far

Community tidy-ups and litter picks. Our volunteers filled two skips with fly-tipped rubbish. Two prosecutions ongoing for fly-tipping using direct evidence from FoTM.



Goalposts sanded and repainted. Graffiti removed, changing rooms doors and portacabin repainted. Promotion of Bag-It, Bin-It and FoTM Dog Code of Conduct to promote responsible dog walkers. Grant for defibrillator. Deep clean of changing room.



New plantings: hedgerow, trees, wildflower seed and bulbs. A “no-mow” policy implemented in some areas to increase biodiversity.

Footpath improvements. New benches, noticeboard and approval for new Turn Moss signs from Manchester and Trafford Councils. Local outreach projects; two local schools recently worked with us to reinstate our ancient hedge



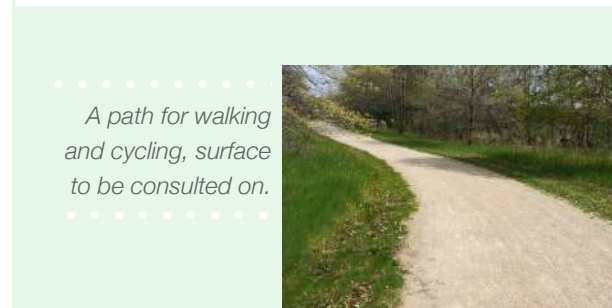
We have had good funding success with our grant awards so far, totalling £15K. We keep an up-to-date list of all relevant grants and have identified further awards which we will apply for if they fit with community priorities.



Some Ideas For The Future



Cafe/visitors centre/classroom and a community meeting room.



A path for walking and cycling, surface to be consulted on.



Illustrated interpretative map.



Wildflower meadow and children's active play area.



Modern fully-accessible toilet block.

Our Partners and Friends.

In order to achieve our aims, we are working with the landowner Trafford Council and their delivery partners Trafford Leisure and Amey, whose role is to run and maintain the site day-to-day. We have worked very hard to understand the aims of these key stakeholders and have an excellent working relationship with all three.



We thank the following for their generous help with support/grants:

Friends of Lordship Rec A very successful Friends group in London, Lordship Rec is a popular, large multi-user community space. FOLR are mentoring FoTM, sharing their advice and experiences as part of NESTA's "Re-thinking Parks" Project. We've been awarded a £5K Community Empowerment Grant.

Trafford Housing Trust Awarded nearly £10K in 2019, for a noticeboard, bike stands, bench, defibrillator, event equipment, professional clean of changing rooms and architect fees to design new building layouts.

RHS "Britain in Bloom - It's Your Neighbourhood" and **"Greening Great Britain."** Creating a new community garden with Stretford Grammar School.

We thank the following for their support and advice:

Sustrans, Groundwork, City of Trees/Trees for Learning, Friends of Longford Park, Stretford in Bloom, Stretford Public Hall, Friends of Victoria Park, Chorlton Wombles, Friends of Chorlton Meadows, Mersey Rivers Trust, The Environment Agency, Manchester Raptor Group, The Ramblers, The Peak and Northern Footpath Society, The Farm Environment Ltd (ecological conservation advice), The Woodland Trust, Fields in Trust, The Open Spaces Society, National Federation of Parks and Green Spaces, Lancashire Wildlife Trust.

How can you help?

If you would like more information or you are interested in becoming a member of Friends of Turn Moss - we welcome your involvement. **Please get in touch** via email or social media or come and say hello at one of our activity sessions or events. We are a friendly, strong and committed volunteer group who love working together to improve our space. The more people who join us, the easier our task becomes, help us make Turn Moss a well-managed green space of which we are all proud.



Friends Of Turn Moss with Stretford MP Kate Green, planting a donated Queens Commonwealth Tree. December 2018



"Turn Moss" by Aedden Grant. Aged 9 yrs old.



[Friends of Turn Moss Public Group](#)



[@OurTurnMoss](#)



theFriendsOfTurnMoss@gmail.com



www.ourturnmoss.org



[@FriendsOfTurnMoss](#)

© Friends Of Turn Moss. 2019