

OUR VISION

TURN



MOSS



Celebratory Walk For Turn Moss, Summer 2018.

*“You don’t realise what you have
- until it is threatened”*

Who are we?

Friends of Turn Moss ❤️ (FoTM) was established in May 2018. We are all volunteers with a passion for the site and a vision to create a safe, well maintained, accessible and environmentally diverse recreational green space which serves the whole community. We initially came together in early 2018, campaigning to halt plans which would have resulted in a sizeable area of Turn Moss being fenced off for a private football club.

The campaign galvanised thousands of people and the many discussions it generated inform our priorities. There has been very little investment in the site over the past decade and improvements are desperately needed. As a Friends Group we can apply for grants and fundraise to help bring positive change.

We work alongside the landowner Trafford Council and key stakeholders to improve Turn Moss for the benefit of the local teams and all the other users.

VISION SUMMARY

We believe Turn Moss has huge untapped potential and can become a fantastic **Sport and Health Hub for Trafford**. It requires better facilities, thoughtful improvements to widen its appeal and clever utilisation of the site’s present assets.

The fields enjoy a wonderful location alongside the River Mersey, Bridgewater Canal and Trans-Pennine Trail, making it the perfect site to become **Trafford’s Gateway to The Mersey Valley**. It offers a “green route” linking the communities of north, west and south Trafford as well as Chorlton. Longford Park is right opposite, accessible paths can provide a healthy link through to the new Civic Quarter.

- ▶ Three clubs are based at Turn Moss: **Stretford Victoria FC, St Johns FC and St Lawrence’s GAA** as well as the **Manchester Amateur Sunday Football League**. We work with them to understand their needs and offer support. Whether it is improving pitches, implementing a Site Management Plan or sourcing funds to upgrade facilities; the best chance to improve the experience of teams at Turn Moss is if we all work together.
- ▶ The site can attract a bigger, more diverse range of visitors. We’d like to **host events and activities on the fields to bring the community together**. We can help Trafford Council achieve greater activity levels and deliver wellbeing benefits, creating a happier, healthier local population.
- ▶ The semi-wild field margins are a wonderful opportunity to diversify what the site offers. **A managed wetland area, wildflower meadow and a community orchard** are all achievable and would attract new visitors without compromising the open aspect. Biodiversity will improve and some of the pitch drainage issues can be given a helping hand from nature. Our recent work on the ancient hedgerow is a useful start.
- ▶ A Forest School uses Turn Moss during the summer. **An outdoor meeting area and storage facility** would help us extend that welcome all year round and allow many more local community groups to use the space.
- ▶ A short **walking and cycling path** from Turn Moss car park to Hawthorn Lane would increase accessibility and provide a route to other safe networks already in place at Longford Park, the canal and Mersey Valley.

Our Community.

FoTM has the largest reach of any Friends Group in Trafford (approximately 3000+ Facebook and Twitter). This provides a huge volunteer base and allows us to utilise social media, alongside conventional methods, to communicate and work with our local community.

We are an unincorporated voluntary association with a 16 strong Committee, who meet monthly. Sub-Groups power the Committee and focus on key areas to improve and maintain Turn Moss, namely:

Sports, Recreation and Dog Walkers.

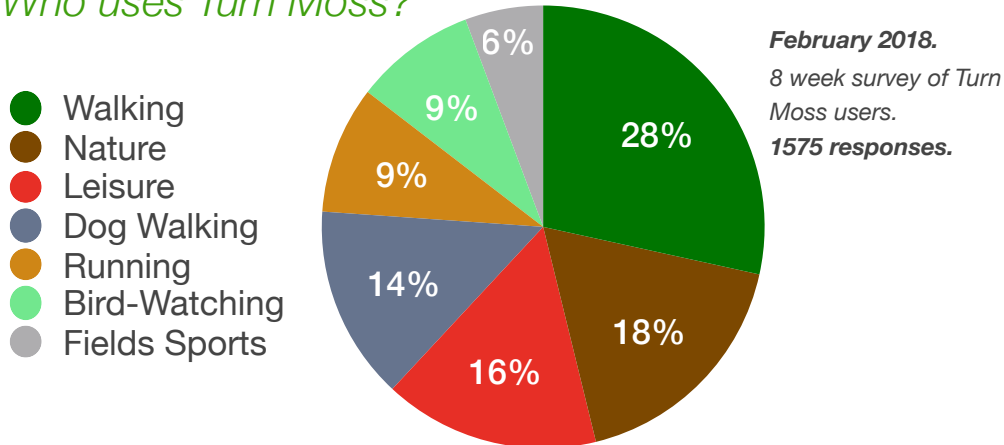
Accessibility.

Natural Environment and Floodplain management.

Education and Outreach.

Heritage and Future Legacy.

Who uses Turn Moss?



“Almost 50% of visitors have used the fields for 20 years or more.

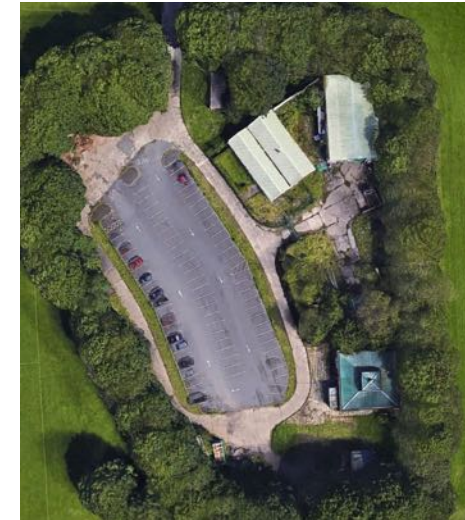
Turn Moss is much-loved. Once it is discovered, people return again and again”

Our Location.

Turn Moss is a recreational area in Stretford, a green gateway to The Mersey Valley, at the southern edge of Longford ward in Trafford. There are two rights of way which cross the fields, connecting the boroughs of Chorlton and Stretford. The site comprises a small car park, surrounded by playing fields (39 hectares) and meadows. It is greenbelt land and the fields are bordered all around by mixed tree woodland (8 hectares), criss-crossing the fields are ancient hedgerows.



There are changing rooms alongside the car park and a fenced compound with two disused buildings, previously used as a Council Depot. This compound provides exciting possibilities to improve community facilities. We will work with users and architects to explore ideas and present these to Trafford Council.



Turn Moss is a Flood Zone 3, it serves an important function during wet months of the year, protecting nearby properties from flooding. Improvements to pitches and paths must be future-proof and work with nature.



Friends of Turn Moss Constitutional Objectives

- 1. Facilitate Turn Moss as a site to improve health and wellbeing, not only for the currently active people in our community, but also to entice the less physically active to visit. Ensure Turn Moss is a public amenity that promotes social interaction, strengthening the community and providing opportunities to reduce social isolation.*
- 2. Listen to the site's local teams and users to understand how their experience at Turn Moss can be enhanced. Liaise and work with Trafford Council (and partners) to deliver these improvements.*
- 3. Promote and enable Turn Moss to be a key green, traffic-free route linking Stretford and Chorlton with the wider Mersey Valley and other areas of Trafford such as Longford Park, the new Trafford Civic Quarter, local shops and amenities, Metrolink and schools.*
- 4. Carry out (either independently or with partner organisations) practical conservation and improvement tasks on Turn Moss, with particular emphasis on increasing biodiversity. Encourage volunteers, visitors and local residents to work alongside us.*
- 5. We will promote Turn Moss and its activities and partnerships via our website, newsletter, social media and at events.*
- 6. Increase the number of people, especially from marginalised and less active demographics, who know of and/or visit Turn Moss for informal exercise, nature or organised sport.*
- 7. Raise funds and receive contributions to run events and to finance improvements to the facilities at Turn Moss and to enhance the natural environment.*

So what needs to be improved?

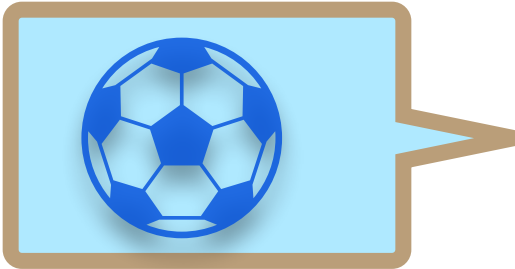
- **CHANGING ROOMS:** We want modern facilities for the local teams based here. With high quality, clean and secure changing rooms, we believe other community and recreational groups will use the fields. It will generate more money for Trafford Council and with a detailed Site Management Plan, facilities can be better maintained and regular upgrades can be scheduled. Changes are essential to encourage more women and youth teams to use Turn Moss. A new design must ensure multiple, flexible and secure spaces, with separate entry points to safely accommodate all ages and genders.
- **PITCHES.** Create flat well-draining sports pitches, utilising lower lying areas for onsite water retention where possible. Improve grass conditions with better drainage solutions and regular maintenance. Use Sustainable Urban Drainage (SUDs) natural solutions in accordance with policies adopted by Trafford Council. Discuss with current teams and Trafford Leisure whether pitch reconfiguring would be beneficial, this could create more junior pitches to satisfy current demand.
- **TOILETS.** Accessible toilets for teams with separate toilets for officials. Public facilities and well designed high standard disabled provision.
- **CAR & BIKE PARKING.** At busy times the car park is full and cars park on the fields and on Turn Moss Road. With clearance of the fly-tipped spoil heap from the north-western side of the car park, we believe more cars can be accommodated. We will encourage visitors to arrive by public transport and active travel, especially by bike, secure bike parking is needed.
- **PATH IMPROVEMENTS.** A hard surface path is needed to allow walking and cycling across the site for all abilities and ages, having a reliable all weather connection to Hawthorn Lane will ensure good accessibility.
- **CAFE.** To provide a place to grab a drink and a bite to eat. In the short-term, that may be by offering a hook-up facility for street food and drink operators and in the longer-term we would like to explore the viability of a permanent cafe and/or office facility on site.
- **SECURITY.** Reduce fly-tipping, dog fouling, anti-social behaviour and prevent pitch damage by vehicles. Encourage community responsibility via easier reporting, cctv, signage, spot fines and more prosecutions.

Improvements Delivered So Far

Community tidy-ups and litter picks. Our volunteers filled two skips with fly-tipped rubbish. Two prosecutions ongoing for fly-tipping using direct evidence from FoTM.



Goalposts sanded and repainted. Graffiti removed, changing rooms doors and portacabin repainted. Promotion of Bag-It, Bin-It and FoTM Dog Code of Conduct to promote responsible dog walkers. Grant for defibrillator. Deep clean of changing room.



New plantings: hedgerow, trees, wildflower seed and bulbs. A “no-mow” policy implemented in some areas to increase biodiversity. Footpath improvements. New benches and noticeboard and new Turn Moss signs from Manchester and Trafford borders. Local outreach projects; two local schools recently worked with us to reinstate our ancient hedge



We have had good funding success with our grant awards so far, totalling £15K. We keep an up to date list of all relevant grants and have identified further awards which we will apply for if they fit with community priorities.



Some Ideas For The Future



Cafe/visitors centre/classroom and a community meeting room.



A path for walking and cycling, surface to be consulted on.



Illustrated interpretative map.



Wildflower meadow and children's active play area.



Modern fully-accessible toilet block.

Our Partners and Friends.

In order to achieve our aims, we are working with the landowner Trafford Council and their delivery partners Trafford Leisure and Amey, whose role is to run and maintain the site day-to-day. We have worked very hard to understand the aims of these key stakeholders and now have an excellent working relationship with all three.



TRAFFORD
COUNCIL



We thank the following for their generous help with site visits/advice/grants:

Friends of Lordship Rec. A long established and very successful Friends group in London. Lordship Rec is a popular, large multi-user community space. FOLR are mentoring FoTM, sharing their advice and experiences as part of NESTA's "Re-thinking Parks" Project. We have been awarded a Community Empowerment Grant worth **£5K** over 2 years.

Trafford Housing Trust. Awarded nearly **£10K** in Jan 2019, for a noticeboard, bike stands, bench, defibrillator, event equipment, professional clean of changing rooms and architect fees to design new building layouts.

Sustrans.

Groundwork. Providing advice, funding, corporate partners and volunteers.

City of Trees and Trees for Learning.

Other Local Friends Groups: Friends of Longford Park, Stretford in Bloom, Stretford Public Hall, Friends of Victoria Park. Chorlton Wombles. Friends of Chorlton Meadows.

Mersey Rivers Trust and The Environment Agency

Manchester Raptor Group.

The Ramblers and The Peak and Northern Footpath Society.

The Farm Environment Ltd (ecological conservation advice).

The Woodland Trust.

Fields in Trust and The Open Spaces Society.

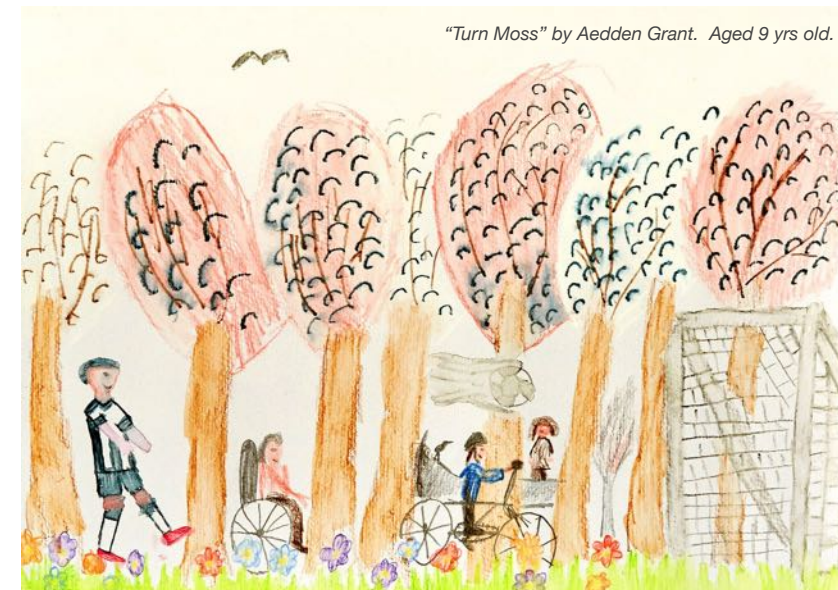
National Federation of Parks and Green Spaces.

Lancashire Wildlife Trust.

RHS "Britain in Bloom - It's Your Neighbourhood".



Friends Of Turn Moss with Stretford MP Kate Green, planting a donated Queens Commonwealth Tree. December 2018



"Turn Moss" by Aedden Grant. Aged 9 yrs old.



Friends of Turn Moss Public Group



@OurTurnMoss



theFriendsOfTurnMoss@gmail.com



www.friendsofturnmoss.tumblr.com



© Friends Of Turn Moss. 2019